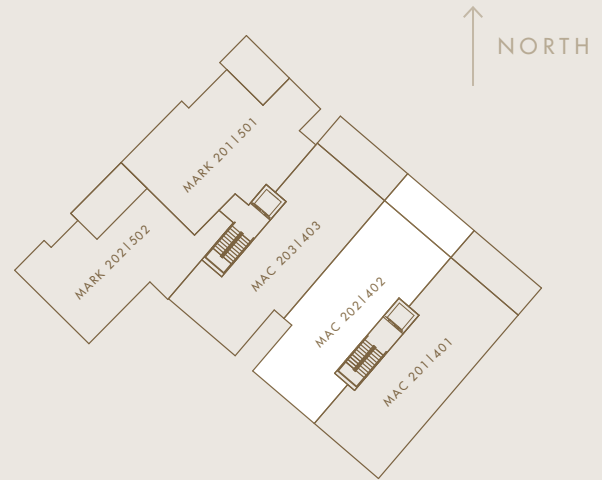
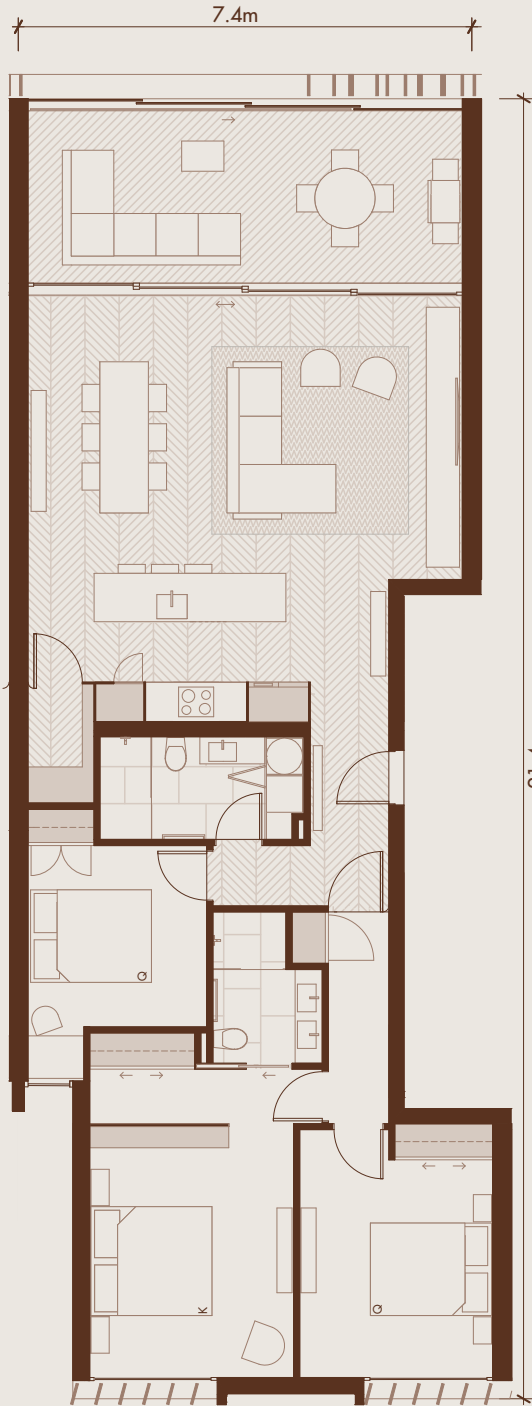


# ST MARKS

Mac 202 | 402



Level 2 & 4 - NTS

| MAC 601 |         |         |
|---------|---------|---------|
| MAC 501 | MAC 502 | MAC 503 |
| MAC 401 | MAC 402 | MAC 403 |
| MAC 301 | MAC 302 | MAC 303 |
| MAC 201 | MAC 202 | MAC 203 |
| MAC 101 | MAC 102 | MAC 103 |

Mac Building Section - NTS

## AREAS

|              |                    |
|--------------|--------------------|
| INTERNAL     | 124 m <sup>2</sup> |
| OUTDOOR ROOM | 22 m <sup>2</sup>  |
| TOTAL        | 146 m <sup>2</sup> |

• AREAS ARE MEASURED TO THE OUTSIDE OF INTERNAL WALLS AND TO THE CENTRE OF INTER-TENANCY WALLS.

• ALL AREAS ARE APPROXIMATE ONLY AND MAY CHANGE.

• LAYOUTS, POSITIONS AND SPECIFICATIONS ARE SUBJECT TO FURTHER CHANGE AS PER THE SALES AGREEMENT.

• FURNITURE AND FURNISHINGS ARE INDICATIVE ONLY AND NOT INCLUDED.